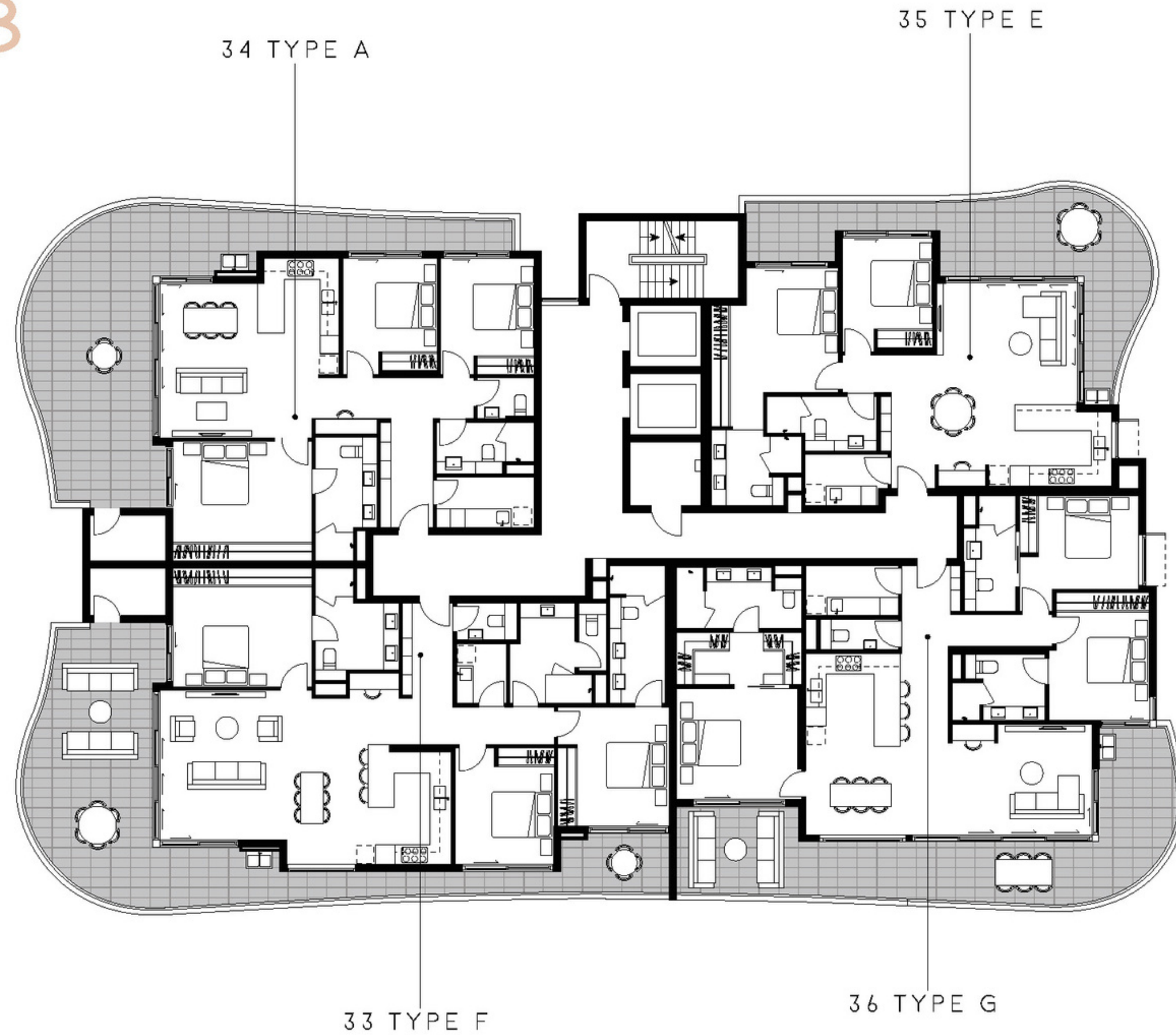
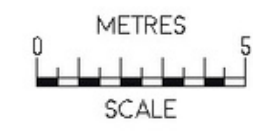


L7-8



Disclaimer: The area of the lot detailed on the final strata plan is the area that the buyer will own. You must rely on the area detailed in the strata plan and not this document. The area of the lot detailed in this document has been calculated using architectural measurements and has been rounded to the nearest whole number. The actual area of a lot on the strata plan will be less than the area of the lot detailed in this document because distances are measured between the external faces of walls (except for party walls, which are measured to the middle point of the party wall) in this architectural drawing, and distances are measured between the inner surfaces of walls on the strata plan.



LEVEL 7 & 8 VIEWS

